

CITY Shanghai Home & Office

WEEKEND
城市周报

Winter 2012



Sweet Retreats

New concept hotels light up Shanghai

BOOK A TABLE

Jing'an Restaurant
at The Puli

BY DESIGN

Create a green
kid's room

EXPERT ADVICE

Servcorp's
Michaela Julian



THE EASY LIFE

Outfit this Space

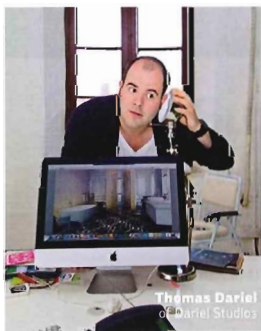
Give your office a makeover this season

When decorating (or redecorating) calls for a professional, you'll want one of Shanghai's best. Here are our top three recommendations for interior decorators who specialize in commercial spaces.

Founded by designer Peter Lam, Hot Dog Décor (www.hotdogdecor.com) offers traditional decorating services as well as decorating help towards the purpose of selling or leasing. Lam also provides shopping assistance for those looking for creative input to decorate on their own. With expertise in commercial (retail, restaurant, creative office) and residential (villa, lane house and apartment) design, Lam creates homey and elegant spaces that are each unique to their owner and feel organic.

By mixing different styles and elements together, Lam creates spaces that burst with personality, paying great attention to detail. If you are looking for a professional who will treat your project as his or her own, Lam is without a doubt your designer. Clients praise his imagination, understanding and network of connections—and he is able to find whatever clients need in a short time for a fair price. Lam's past work includes The Villa, a chic women's fashion boutique in the former French Concession.

The studio aims to break mainstream design clichés



Thomas Dariel
of Dariel Studio

Genco Berk (www.genco-berk-design.com) has more than 30 years of experience in the planning and execution of interior design projects. The international company specializes in high-end projects ranging from residential to retail. Berk is known for using timeless designs to achieve a well-balanced style. With offices in Shanghai, Beijing, Japan and Europe, they have numerous international clients

and prioritize building relationships, starting with meeting their functional and budgeting needs.

The renowned interior designers at Dariel Studio (www.darielstudio.com) elaborate distinctive concepts for living spaces, creative offices, concept stores and high-end hospitality projects (hotels, spas, clubs, bars and restaurants). Headed by lead designer Thomas Dariel, the studio aims to break mainstream design clichés by creating bold, creative spaces. The studio has collaborated with many luxury brands and international groups such as Christoffe. They are also well known for designing the F&B concepts of celebrated chef David Laris at different venues around China. Dariel's portfolio features 50-plus projects in Shanghai, Sheshan, Zhouzhuang and Beijing alone. The studio designs for leisure, with both comfort and sophistication in mind. **Georgia Barnett**

Business Centers

686 Jiujiang 玺隆大厦 People's Square > 686 Jiujiang Lu/near Guangxi Bei Lu, Metro Line 1, 2 & 8 People's Square Station/九江路686号(近广西北路, 地铁1, 2, 8号线人民广场站)

Aetna Tower 安泰大厦 Gubei/Hongqiao > 107 Zunyi Lu/near Tan Shan Lu, Metro Line 2 Loushanguan Station/遵义路107号(近天山路, 地铁2号线漕山北路站)

Anken Green 688 Huai An Lu, near west Suzhou Creek Lu, Tel: 156-2167-2421, info@ankengreen.com, www.ankengreen.com.

AnkenWarehouse 摩尼Fi 9am-6pm, Wi-Fi internet, Jing An > 4/F, Bldg. C, 1147 Kangding Lu/near Wuyang Nan Lu/康定路1147号C号楼4楼(近武宁南路), Tel: 136-2167-2421, info@ankenwarehouse.com, www.ankenwarehouse.com.

apbcOffices 上海艾碧克商务中心 Wi-Fi internet, Lujiazui > Mirae Asset Pudong > 20/F, 166 Lujiazui Ring Road, Pudong District, Shanghai/Metro Line 2 上海浦东艾碧克国际广场166号未来资产1620号楼, Tel: 021-51748888, info@apbcoffices.com, www.apbcoffices.com.

apbcOffices 上海艾碧克商务中心 大上海时代广场, Hualian Zhong Lu > Hui Square Puxi > 26/F, 593 Hualian Zhong Road, Luwan District, Shanghai/Metro Line 1, 8, Tel: 021-51748888, info.sh@apbcoffices.com, www.apbcoffices.com.

apbcOffices 上海艾碧克商务中心 浦东东明时代, Wi-Fi internet, Century Park > Time Square Pudong > 17/F, 500 Zhang Yang Road, Pudong District, Shanghai/Metro Line 2, 4, 6, 9, Tel: 021-51748888, info.sh@apbcoffices.com, www.apbcoffices.com.

apbcOffices 上海艾碧克商务中心 新茂大厦, Xintiandi > Platinum Xintiandi > 12/F, 233 Tai Cang Road, Luwan District, Shanghai/Metro Line 2, Tel: 021-51748888, info.sh@apbcoffices.com, www.apbcoffices.com.

Apollo Business Center 阿波罗商务中心 9am-6pm, Apollo Huaihai Center > 4/F, Fuxing Commercial Building, 139 Rujin Road/No. 1, Huangpu District, Tel: 021-6135-6088, Apollo Flagship Center: Apollo Building, 1440 Yan'an Road (N), Jing'an District, Tel: 021-6135-1288, Apollo Tomson Center: 22/F, Tomson Commercial Building, 710 Dongfang Road, Pudong District, Tel: 021-6162-2288, Apollo Xuhui Center: 16/F, Feidiao International Building, 1065 Zhaoliangjing Road, Xuhui District, Tel: 021-5158-1688, Apollo Hongqiao Center: 26/F, New Town Center Building, 83 Loushanguan Road, Changning District, Tel: 021-5133-7688.

Asian-Biz Center 上海艾比森商务咨询有限公司 24H, Mohuli > 26/F, Ascendas Plaza, 333 Tianyaoqiao Lu/near Nandan Dong Lu/天钥桥路333号腾飞大厦26楼(近衡山路), Tel: 5232-5258, -119, -16, -16/F, Merchants Plaza South Wing, 258 Weihai Lu/near Chengpu Bei Lu/威海路258号招商局广场南翼16F(近威海路), Tel: 5228-3212, 9am-6pm, Pudong > 34/F, Sunacmei Center, 1000 Century Avenue, Daoyuan Building/Hao Lu/世纪大道1000号新凯来大厦14楼(近浦东南路), Tel: 5836-0853.

Benben Mansion 本本大厦 Nanjing Xi Lu > 300 Xikang Lu/near Xizhu Lu/西康路300号(近新闸路)

Bingo Business Centre Instant Office 15/F, Dragon Tower, 2 Zhongshan Lu/中山路15号, Tel: (021) 8359-0211.

Bridge 8 Jiangqu Zhong Lu, 426 Jiumen Lu/550 Jiumen Lu, Tel: 6095-2813, www.bridge.com.

Bund Center 外滩中心 8am-8pm, The Bund > 222 Yan'an Road Lu/near Henan

Zhong Lu, Metro Line 2 Nanjing Dong Lu Station/延安东路222号(近河南中路, 地铁2号线南京东路站), Tel: 6335-0000.

Century Bashi Building 世纪巴士大厦 Huaihai Zhong Lu > 398 Huaihai Zhong Lu/near Maqiao Lu, Metro Line 1 Huangpi Nan Lu Station/淮海中路398号(近马当路, 地铁1号线黄浦南路站)

CH Financial Center 摩创金融中心 Nanjing Dong Lu > 288 Nanjing Xi Lu/near Huangpi Bei Lu, Metro Line 1, 2 & 8 People's Square Station/南京东路288号(近黄浦区北路, 地铁1, 2, 8号线人民广场站)

Chamtime Int'l Financial Center 长泰国际金融中心 Lujiazui > 1589 Shiji Da Dao/near Pudong Nan Lu/世纪大道1589号(近浦东南路)

Connections Business Hub 9am-6pm, Nanjing Xi Lu > 808, 818 Nanjing Xi Lu/near Shimin Yi Lu, Metro Line 2 Nanjing Xi Lu Station/南京西路818号长春大厦808室(近石门二路, 地铁2号线南京西路站), Tel: 6195-2988, general@connectsbiz.com, www.connectionsbiz.com.

Dazhong Finance Tower 大众金融大厦 Changping > 1023 Yan'an Xi Lu/near Jiangsu Lu, Metro Line 2 Jiangsu Lu Station/延安西路1023号(近江苏路, 地铁2号线江苏路站), Tel: 5238-5218, 5238-5358.

Fortune International Plaza 财富国际广场 Yangpu > 39 Gaoqian Lu/near Wujiaochang Guochu Road 39号(近五角场), Tel: 5509-6666, 400-820-5579, www.fortuneplaza.net.

Fu Jing Business Center French Concession > 100 Fuxing Xi Lu/near Yongfu Lu/复兴西路100号(近永福路), Tel: 6249-9555, ty@spil.com.

Golden Landmark Tower 印尼黄金置地大厦 Lujiazui > 150 Yinchang Zhong Lu/near Pudong Nan Lu, Metro Line 2 Lujiazui Station/南京东路150号(近浦东南路, 地铁2号线陆家嘴站)

Hightstreet LOFT 尚街 10am-10pm, Luwan > 508 Jianshan Lu/near Jiangsu Xi Lu/嘉善路508号(近建国西路), Tel: 6471-5665, www.hightstreetloft.com.

Hongyi Plaza 宏伊国际广场 People's Square > 288 Jiujiang Lu/near Hennan Zhong Lu, Metro Line 2 Nanjing Dong Lu Station/九江路288号(近河南中路, 地铁2号线南京东路站), Tel: 6922-1599.

Huaihai Plaza 淮海国际广场 9am-5:30pm, Huaihai Zhong Lu > 1045 Huaihai Zhong Lu/near Xiangyang Lu/淮海中路1045号(近襄阳路), Tel: 6433-5566.

Jin Jiang International Shopping Center 上海国际购物中心 8:20am-5pm, Huaihai Zhong Lu > 527 Huaihai Zhong Lu/near Chengpu Nan Lu/淮海中路527号(近成都南路), Tel: 5306-0876, 5306-6666 ext. 6356.

Jin Mao Tower 金茂大厦 Lujiazui > 88 Shiji Da Dao/near Lujiazui Dong Lu, Metro Line 2 Lujiazui Station/世纪大道88号(近陆家嘴东路, 地铁2号线陆家嘴站), Tel: 5047-6188.

Jumpstart Business Center Jumpstart Business Center, one of Asia's best serviced office operators, provides great locations and services in Hong Kong and Shanghai. Jumpstart's industry-unique Neo Suites, offer an unrivalled combination of larger room size, efficient layout, in-room facilities and value-added services. Tel: 400-1199-775, Shanghai@jumpstartoffices.com, www.jumpstartoffices.com. Jumpstart Wheelco Square: 25/F, Wheelco Square 1717 Nanjing West Road (near Huashan Road), Metro Line 2 and 7, Jingan Temple Station/上海南京西路1717号金丰国际广场25楼延安山路, 地铁2号线静安寺站, Jumpstart Central Plaza: 25/F, Central Plaza, 361